



# RTG4 DIGITAL KEYRING PRESSURE GAUGE

Tyre Air Pressure Checking Gauge



LED ON

AUTO  
OFF



Psi  
BAR  
kPA  
kg/cm<sup>2</sup>



Bicycle



E-Bike



Motorcycle



Car



Van



Motorhome

## INNOVATION ON THE MOVE

#30143

Cyan Magenta Yellow Black  
score dimension 49 x 147 mm

NOT FOR PRINT PRODUCTION!  
本品不可印刷生产

### WARNING:

This PDF file is for reference only and not to be used for the creation of production art.

Colour printouts and screen displays should not be used for colour approval as colours may vary from device to device. The colour values for this file are defined in either Pantone (PMS), HKS, or in process colours (CMYK).

For obtaining hard-copies in actual size (1:1) you need to enter the proper settings in your printer options.

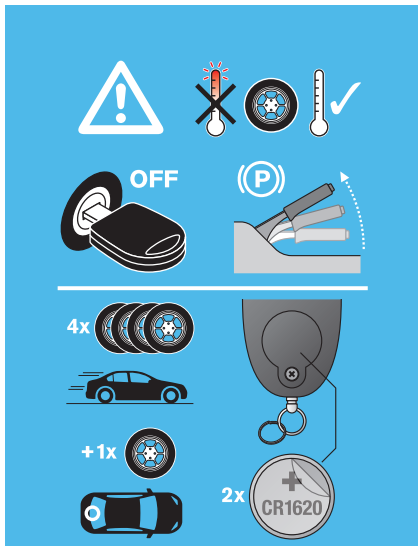
### 警告:

本PDF文档仅作为参照文件，不能将本档用于印刷生产或者制作菲林。

本文档的彩色打印版本或其在电脑屏幕上显示的色彩，不可用于最终的色彩参照。因为硬件或设备的差异，可能造成色彩的偏差。最终正式的色彩请遵照由色板卡片PMS,HKS或者CMYK(青红黄黑)所定义的色彩。

若本文档的打印件要获取1:1的原始尺寸，须在打印选项中作出相应的设置。

# OSRAM



**NOT FOR PRINT PRODUCTION!**  
**本品不可印刷生产**

**WARNING:**

This PDF file is for reference only and not to be used for the creation of production art.

Colour printouts and screen displays should not be used for colour approval as colours may vary from device to device. The colour values for this file are defined in either Pantone (PMS), HKS, or in process colours (CMYK).

For obtaining hard-copies in actual size (1:1) you need to enter the proper settings in your printer options.

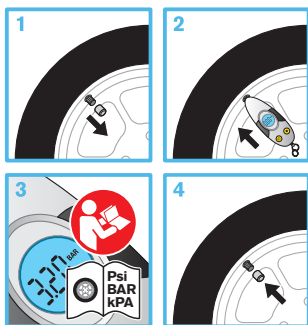
**警告:**

本PDF文档仅作为参照文件，不能将本档用于印刷生产或者制作菲林。

本文档的彩色打印版本或在电脑屏幕上显示的色彩，不可用于最终的色彩参照。因为硬件或设备的差异，可能造成色彩的偏差。最终正式的色彩请遵照由色板卡片PMS,HKS或者CMYK (青红黄黑) 所定义的色彩。

若本文档的打印件要获取1:1的原始尺寸，须在打印选项中作出相应的设置。

**OSRAM**



**Manufactured by:**  
**Ring Automotive Limited**  
Gelderd Road, Leeds, LS12 6NA  
United Kingdom  
Telephone +44 (0)113 213 2000  
Email autosales@ringautomotive.com  
www.ringautomotive.com

**Authorised representative:**  
**OSRAM GmbH**  
Nonnendammallee 44,  
13629 Berlin, Germany  
Email: automotive-service@osram.com

Made in China



C10238698

G15129005

20.02.24

#30143

Cyan Magenta Yellow Black  
score dimension 49 x 147 mm



- GB** WARNING - KEEP OUT OF REACH OF CHILDREN. If battery is swallowed or placed inside any part of the body it can cause severe or fatal injuries within 2 hours. Seek immediate medical attention.
- FR** AVERTISSEMENT – TENIR HORS DE PORTÉE DES ENFANTS. La batterie peut causer des blessures graves ou mortelles en deux heures ou moins si elle est avalée ou placée dans une partie du corps. Si cela se produit ou en cas de suspicion, consulter immédiatement un médecin.
- DE** ACHTUNG: AUSSERHALB DER REICHWEITE VON KINDERN AUFBEWAHREN. Wird die Batterie verschluckt oder in einen anderen Teil des Körpers eingeführt, kann sie innerhalb von 2 Stunden schwere oder tödliche Verletzungen verursachen. Nehmen Sie in diesem Fall sofort ärztliche Hilfe in Anspruch!
- IT** AVVERTENZA - TENERE FUORI DALLA PORTATA DEI BAMBINI. Se la batteria viene ingerita o inserita in una parte corporea, può causare lesioni gravi o fatali nel giro di due ore. Consultare immediatamente un medico.
- ES** ADVERTENCIA - MANTENGA FUERA DEL ALCANCE DE LOS NIÑOS. Tragar o ingerir la batería puede causar lesiones graves o mortales en tan solo 2 horas. Si esto ocurriera, acuda inmediatamente al médico.
- PT** AVISO - MANTER FORA DO ALCANCE DAS CRIANÇAS. Se a bateria for engolida ou colocada dentro de qualquer parte do corpo, poderá causar lesões graves ou fatais dentro de 2 horas. Procurar assistência médica imediata.
- NL** WAARSCHUWING - BUITEN BEREIK VAN KINDEREN HOUDEN. Als de batterij wordt ingeslikt of in het lichaam wordt ingebracht kan dit binnen 2 uur ernstig of fataal letsel veroorzaken. Zoek onmiddellijk medische hulp.
- SE** VARNING – FÖRVARAS OÅTKOMLIGT FÖR BARN. Om ett batteri sväljs eller placeras inuti någon del av kroppen kan det orsaka allvarliga eller dödliga skador inom 2 timmar. Sök omedelbar läkarevård.
- FI** VAROITUS – SÄILYTETTÄVÄ LASTEN ULOTTUMATTOMISSA. Nieltäessä paristo tai sen joutuessa mihin tahansa kehon osaan sisäin, voi se aiheuttaa vakavia tai kuolemaan johtavia vammoja 2 tunnin kuluessa. Hakeudu välittömästi lääkäriin.
- NO** ADVARSEL – OPPBEVARES UTILJGJENGLIG FOR BARN. Hvis batteriet svelges eller plasseres i kroppens åpninger kan det forårsake alvorlige skader eller død innen 2 timer. Søk legehjelp umiddelbart.

#30143

Magenta Yellow Black  
score dimension 49 x 147 mm

NOT FOR PRINT PRODUCTION!  
本品不可印刷生产

#### WARNING:

This PDF file is for reference only and not to be used for the creation of production art.

Colour printouts and screen displays should not be used for colour approval as colours may vary from device to device. The colour values for this file are defined in either Pantone (PMS), HKS, or in process colours (CMYK).

For obtaining hard-copies in actual size (1:1) you need to enter the proper settings in your printer options.

#### 警告:

本PDF文档仅作为参照文件，不能将本档用于印刷生产或者制作菲林。

本档的彩色打印版本或其于电脑屏幕上显示的色彩，不可用于最终的色彩参照。因为硬件或设备的差异，可能造成色彩的偏差。最终正式的色彩请遵照由色板卡片PMS、HKS或者CMYK（青红黄黑）所定义的色彩。

若本档的打印件要获取1:1的原始尺寸，须在打印选项中作出相应的设置。

**OSRAM**

- DK** ADVARSEL – SKAL OPBEVARES UTILGÆNGELIGT FOR BØRN. Hvis batteriet indtages eller anbringes inden i nogen som helst del af kroppen, kan det forårsage alvorlige eller livsfarlige kvæstelser inden for 2 timer. Søg omgående lægehjælp.
- CZ** VAROVÁNÍ – UCHOVÁVEJTE MIMO DOSAH DĚTÍ. Pokud se baterie dostane do kterékoliv části těla nebo dojde k jejímu spolknutí, může do 2 hodin způsobit vážná nebo smrtelná zranění. Okamžitě vyhledejte lékařskou pomoc.
- HU** FIGYELEM – GYERMEKEKTŐL ELZÁRVA TARTANDÓ. Az elemek két órán belül súlyos vagy halálos sérüléseket okozhatnak, ha lenyelik vagy a test bármely részébe helyezik őket. Azonnal forduljon orvoshoz.
- PL** OSTRZEŻENIE – TRZYMAĆ Z DALA OD DZIECI. Połknięcie baterii lub umieszczenie jej wewnątrz jakiegokolwiek części ciała może spowodować poważne lub śmiertelne obrażenia w ciągu 2 godzin. W takim wypadku należy natychmiast zwrócić się o pomoc lekarską.
- RO** AVERTISMENT - A NU SE LĂSA LA ÎNDEMÂNĂ COPILOR. În cazul în care bateria este înghițită sau introdusă în orice parte a corpului, aceasta poate provoca leziuni grave sau fatale în decurs de 2 ore. Solicitați imediat asistență medicală.
- UA** УВАГА! ТРИМАТИ ПОДАЛІ ВІД ДІТЕЙ. Якщо елемент живлення проковтується або опиняється всередині будь-якої частини тіла, це може призвести до серйозних чи смертельних пошкоджень протягом 2 годин. негайно зверніться по медичну допомогу.

**NOT FOR PRINT PRODUCTION!**  
本品不可印刷生产

## WARNING:

This PDF file is for reference only and not to be used for the creation of production art.

Colour printouts and screen displays should not be used for colour approval as colours may vary from device to device. The colour values for this file are defined in either Pantone (PMS), HKS, or in process colours (CMYK).

For obtaining hard-copies in actual size (1:1) you need to enter the proper settings in your printer options.

### 警告:

本PDF文档仅作为参照文件，不能将本档用于印刷生产或者制作菲林。

本文档的彩色打印版本或其在电脑屏幕上显示的色彩，不可用于最终的色彩参照。因为硬件或设备的差异，可能造成色彩的偏差。最终正式的色彩请遵照由色板卡片PMS、HKS或者CMYK（青红黄黑）所定义的色彩。

若本文档的打印件要获取1:1的原始尺寸，须在打印选项中作出相应的设置。

**OSRAM**

#30143

Magenta Yellow Black  
score dimension 49 x 147 mm